
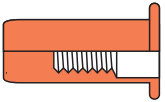
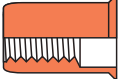
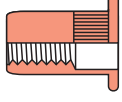
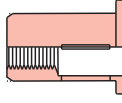
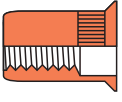
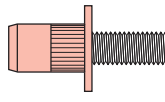


Contents/产品目录

Blind Rivet Nuts 铆螺母系列

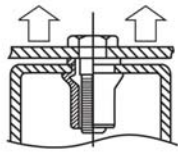
Steel Rivet Nuts 碳钢铆螺母			
	FH-RB 平头光身	P/04	
	FH-RBC 平头光身盲孔		
	RH-RB 小头光身	P/05	
	RH-RBC 小头光身盲孔		
	FH-KB 平头条纹	P/06	
	FH-KBC 平头条纹盲孔		
	RH-KB 小头条纹	P/07	
	RH-KBC 小头条纹盲孔		
	CH-RB 沉头光身	P/08	
	CH-RBC 沉头光身盲孔		
	CH-KB 沉头条纹	P/09	
	CH-KBC 沉头条纹盲孔		
	FH-SHB 平头半六角(内圆外方)	P/10	
			

Blind Rivet Nuts 铆螺母系列

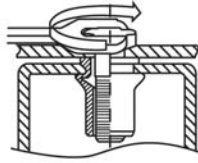
	SFH-KB-US AVK 小头条纹 (美标)	P/18		RHH-IHB/SS A2小头半六角	P/25
Stainless Steel Rivet Nuts 不锈钢铆螺母				RHH-IHBC/SS A2小头半六角盲孔	
	FH-RB/SS A2平头光身	P/19		FH-IHB/SS A2平头半六角	P/26
	FH-RBC/SS A2平头光身盲孔			FH-IHBC/SS A2平头半六角盲孔	
	FH-KB/SS A2平头条纹	P/20	Aluminum Rivet Nuts 铝制铆螺母		
	FH-KBC/SS A2平头条纹盲孔			FH-RB/AL 铝平头光身	P/27
	RH-RB/SS A2小头光身	P/21		RH-RB/AL 铝小头光身	
	RH-RBC/SS A2小头光身盲孔			FH-KB/AL 铝平头条纹	P/28
	RH-KB/SS A2小头条纹	P/22		RH-KB/AL 铝小头条纹	
	RH-KBC/SS A2小头条纹盲孔		Other Rivet Nuts 其他铆螺母		
	CH-RB/SS A2沉头光身	P/23		FH-SQB 平头方型铆螺母	P/29
	CH-RBC/SS A2沉头光身盲孔			FH-SLB 膨胀铆螺母	
	CH-KB/SS A2沉头条纹	P/24		BRN 铆螺母柱	P/30
	CH-KBC/SS A2沉头条纹盲孔				

(标准STANDARD BY:GB/T17880.6-1999)

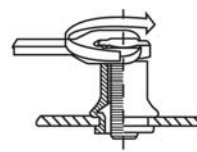
铆螺母技术条件 TECHNICAL DATA SHEET



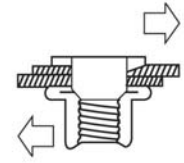
Axial proof load



Broken torque



Torque to turn



Shearing strength

TABLE 1:AXIAL PROOF LOAD FOR THREAD(保证载荷)

Unit:N

铆螺母 Rivet nut	机械性能 Mechanical char	螺纹规格 Thread Size							
		M3	M4	M5	M6	M8	M10	M12	
平头, (小) 沉头, 圆柱, 六角 Round and Hex, Flat and (Reduced) countersunk head	保证载荷 Proof load	不锈钢, 碳钢 steel/stainless steel	3900	6800	11500	16500	25000	32000	34000
		铝 Aluminum	1900	4000	6500	7800	12300	17500	---

TABLE 2:BROKEN TORQUE(破坏扭矩)

Unit:N.m

螺纹规格 Thread Size	M3	M4	M5	M6	M8	M10	M12
Steel/Inox Flat head, round and hex	2	5	8.5	15	26	50	80
Steel/Inox Countersunk head, round and hex	1	4	8	15	26	45	70
Steel/Inox Reduced head, round and hex	1	3	6	11	20	32	50
Alu Flat and reduced (counter)head round body	0.7	2.5	5	8	20	25	---

TABLE 3:TURNING TORQUE FOR CLAMPING FORCE(转动扭矩)

Unit:N.m

螺纹规格 Thread Size	M3	M4	M5	M6	M8	M10	M12
Steel/Inox Flat head, round body	0.5	1	2	4.5	5.5	11	30
Steel/Inox (Reduced) counter head round	0.4	0.8	1.5	3.5	4.5	8.5	24
Aluminum Flat head, round body	0.25	0.9	1.5	3.5	5	6.5	21
Aluminum (Reduced) counter, round body	0.2	0.7	1.2	2.5	4	5	16

TABLE 4:SHEARING STRENGTH(剪切力)

Unit:N

铆螺母 Rivet nut	机械性能 Mechanical char	螺纹规格 Thread Size							
		M3	M4	M5	M6	M8	M10	M12	
Round and Hex, Flat and (Reduced) countersunk head	剪切力 Shearing	不锈钢, 碳钢 steel/stainless steel	900	1500	2000	3000	4400	5000	6500
		铝 Aluminum	600	1000	1200	2000	2400	3800	---

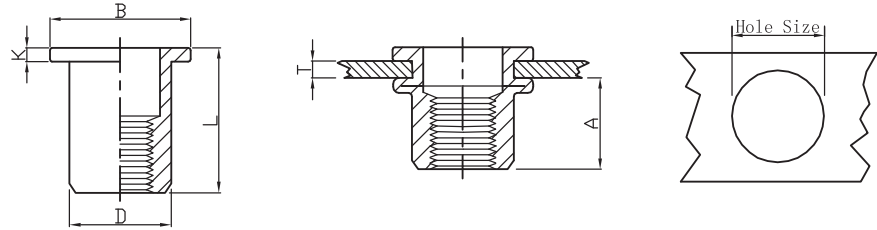
材质: 1.碳钢 Steel for C1008 2.不锈钢 Stainless steel for ANSI304 3.铝 Aluminum for Almg2.5

以上所以技术资料仅供参考。以我们的实际检测报告为准。

ALL THESE DATA ARE JUST FOR YOUR REFERENCE. THE EXACT DATA PLEASE FOLLOW OUR PHYSICAL TESTS.

FH-RB

平头光身 Flat Head Round Body Plain

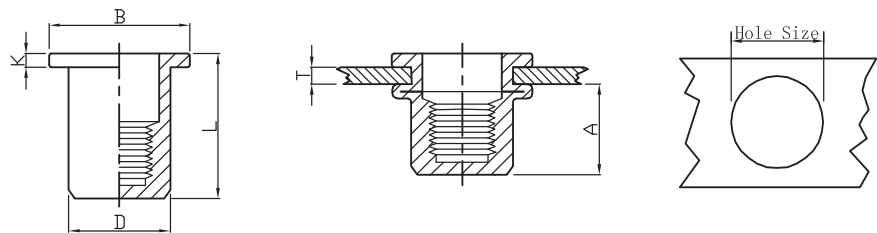


UNIT(单位): mm

螺纹 Thread	编号 P/N	T(GRIP RANGE) Min Max	A Rer	Hole Size $+0.1$ 0	D $+0.07$ -0.1	B	K	L
M3	FH-RB-0315	0.5-1.5	4.7	5.0	4.9	7.2	0.8	8.5
	FH-RB-0325	1.5-2.5						9.5
M4	FH-RB-0420	0.5-2.0	6.0	6.0	5.9	8.5	0.8	10.5
	FH-RB-0435	2.0-3.5						12.0
M5	FH-RB-0525	0.5-2.5	7.5	7.0	6.9	10.0	1.0	13.0
	FH-RB-0550	2.5-5.0						17.0
M6	FH-RB-0630	0.5-3.0	9.2	9.0	8.9	12.3	1.3	15.5
	FH-RB-0655	3.0-5.5						18.0
M8	FH-RB-0835	0.5-3.5	11.5	11.0	10.9	15.0	1.5	18.5
	FH-RB-0860	3.5-6.0						21.0
M10	FH-RB-1025	0.5-2.5	11.5	13.0	12.9	16.3	1.5	17.0
M10	FH-RB-1040	2.5-4.0	12.5	13.0	12.9	17.0	1.6	21.0
	FH-RB-1060	4.0-6.0						24.0
M10	FH-RB-1035(12H)	1.0-3.5	11.0	12.0	11.9	16.0	1.6	19.0
M12	FH-RB-1240	1.0-4.0	13.5	15.0	14.9	18.0	1.7	22.0
	FH-RB-1265	4.0-6.5						25.0
M12	FH-RB-1240(16H)	1.0-4.0	16.0	16.0	15.9	22.0	2.0	25.0
M16	FH-RB16	2.5-5.0	20.0	21.0	20.9	26.0	2.5	33.0

FH-RBC

平头光身盲孔 Flat Head Round Body Plain Close End

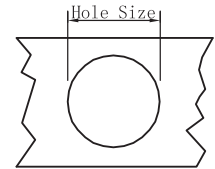
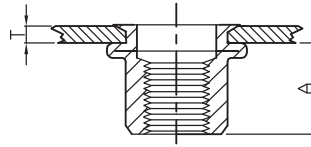
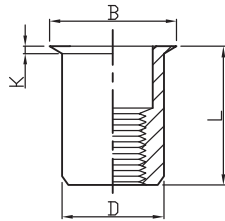


UNIT(单位): mm

螺纹 Thread	编号 P/N	T(GRIP RANGE) Min Max	A Rer	Hole Size $+0.1$ 0	D $+0.07$ -0.1	B	K	L
M3	FH-RBC-0315	0.5-1.5	10.0	5.0	4.9	7.2	0.8	13.3
M4	FH-RBC-0420	0.5-2.0	11.3	6.0	5.9	9.0	0.8	16.0
	FH-RBC-0440	2.0-4.0						18.0
M5	FH-RBC-0525	0.5-2.5	11.5	7.0	6.9	10.0	1.0	17.0
	FH-RBC-0550	2.5-5.0						19.0
M6	FH-RBC-0630	0.5-3.0	12.7	9.0	8.9	12.3	1.3	19.2
	FH-RBC-0650	3.0-5.5						21.0
M8	FH-RBC-0830	0.5-3.0	14.8	11.0	10.9	15.0	1.5	21.5
	FH-RBC-0855	3.0-5.5						24.0
M10	FH-RBC-1040	1.0-4.0	19.2	13.0	12.9	17.0	1.6	27.0

RH-RB

小头光身 Reduce Head Round Body Plain

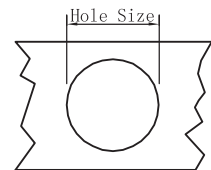
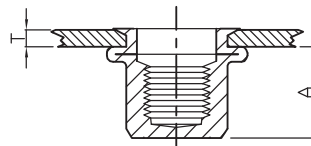
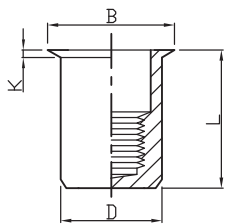


UNIT(单位): mm

螺纹 Thread	编号 P/N	T(GRIP RANGE) Min Max	A Rer	Hole Size $+0.1$	D $+0.07$ -0.1	B	K	L
M3	RH-RB-0315	0.5-1.5	6.2	5.0	4.9	6.0	0.5	9.0
M4	RH-RB-0420 RH-RB-0440	0.5-2.0 2.0-4.0	6.5	6.0	5.9	7.0	0.5	10.5 13.0
M5	RH-RB-0520 RH-RB-0540	0.5-2.0 2.0-4.0	7.0	7.0	6.9	8.0	0.5	11.5 13.0
M6	RH-RB-0625 RH-RB-0650	0.5-2.5 2.5-5.0	8.5	9.0	8.9	10.5 10.0	0.6 0.6	14.0 17.0
M8	RH-RB-0830 RH-RB-0850	0.5-3.0 3.0-5.0	10.0	11.0	10.9	12.0	0.65	16.5 18.5
M10	RH-RB-1030 RH-RB-1055	0.5-3.0 3.0-5.5	13.0	13.0	12.9	14.1	0.7	17.7 21.0
M10	RH-RB-1030(12H)	0.5-3.0	12.5	12.0	11.9	13.0	0.7	18.0

RH-RBC

小头光身盲孔 Reduce Head Round Body Plain Close End



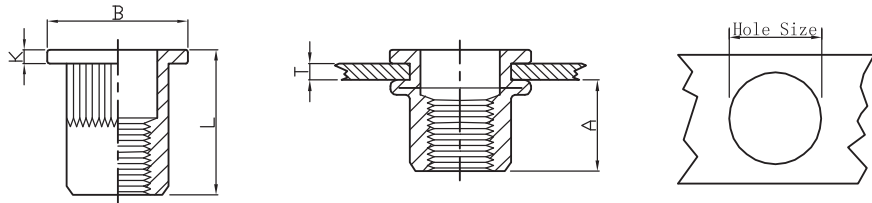
UNIT(单位): mm

螺纹 Thread	编号 P/N	T(GRIP RANGE) Min Max	A Rer	Hole Size $+0.1$	D $+0.07$ -0.1	B	K	L
M4	RH-RBC-0420 RH-RBC-0435	0.5-2.0 2.0-3.5	11.0	6.0	5.9	7.0	0.5	15.0 16.0
M5	RH-RBC-0520 RH-RBC-0535	0.5-2.0 2.0-3.5	12.5	7.0	6.9	8.0	0.5	16.5 17.5
M6	RH-RBC-0625 RH-RBC-0640	0.5-2.5 2.5-4.0	15.5	9.0	8.9	10.0	0.6	20.5 22.0
M8	RH-RBC-0830 RH-RBC-0845	0.5-3.0 2.5-4.5	17.0	11.0	10.9	12.0	0.65	23.0 24.5
M10	RH-RBC-1030 RH-RBC-1050	1.0-3.0 3.0-5.0	18.2	13.0	12.9	14.1	0.7	24.5 26.0



FH-KB

平头条纹 Flat Head Knurled Body



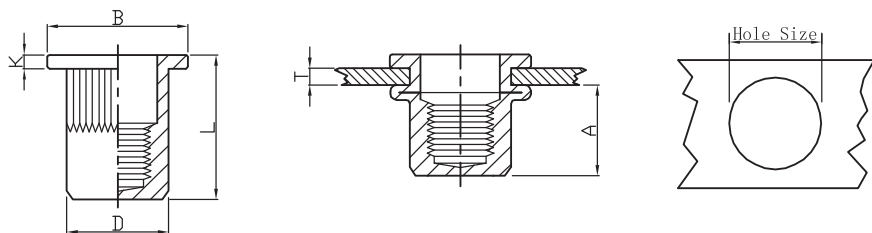
UNIT(单位): mm

螺纹 Thread	编号 P/N	T(GRIP RANGE) Min Max	A Rer	Hole Size $+0.1$ 0	D $+0.07$ -0.1	B	K	L
M3	FH-KB-0315	0.5-1.5	6.0	5.0	4.9	8.0	0.8	10.0
M4	FH-KB-0420	0.5-2.0	6.0	6.0	5.9	9.0	0.8	10.5
	FH-KB-0435	2.0-3.5						12.0
M5	FH-KB-0525	0.5-2.5	7.5	7.0	6.9	10.0	1.0	13.0
	FH-KB-0550	2.5-5.0	8.5					16.5
M6	FH-KB-0630	0.5-3.0	9.2	9.0	8.9	12.30 (*13.0)	1.3	15.5
	FH-KB-0655	3.0-5.5	10.5					19.5
M8	FH-KB-0835	1.0-3.5	11.5	11.0	10.9	14.5(*16.0)	1.5	18.5
	FH-KB-0860	3.5-6.0						21.0
M10	FH-KB-1040	1.0-4.0	13.5	13.0	12.9	17.0(*19.0)	1.7	21.5
	FH-KB-1065	4.0-6.5						24.0
M12	FH-KB-1240	1.0-4.0	13.5	15.0	14.9	18.0	1.7	22.0
	FH-KB-1265	4.0-6.5	14.0					25.0
M10	FH-KB-1035(12H)	1.0-3.5	11.0	12.0	11.9	16.0	1.6	19.0
M12	FH-KB-1240(16H)	1.0-4.0	15.0	16.0	15.9	22.0	2.0	25.0
	FH-KB-1260(16H)	3.5-6.0	16.0					28.0

※部分为可代替尺寸，客户需要请另做说明 Part are different series, if customer need this size, please mark.
 ※这个系列的产品包含带菊花和不带菊花系列 All this part included serration or without serration under the flange.

FH-KBC

平头条纹盲孔 Flat Head Knurled Body Close End

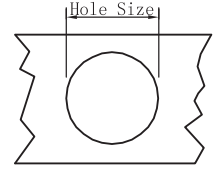
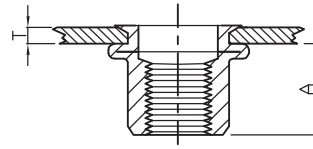
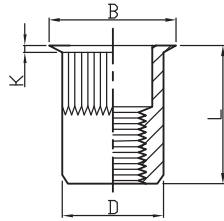


UNIT(单位): mm

螺纹 Thread	编号 P/N	T(GRIP RANGE) Min Max	A Rer	Hole Size $+0.1$ 0	D $+0.07$ -0.1	B	K	L
M4	FH-KBC-0420	0.5-2.0	11.3	6.0	5.9	9.0	0.8	16.0
	FH-KBC-0440	2.0-4.0						18.0
M5	FH-KBC-0530	0.5-3.0	11.5	7.0	6.9	10.0	1.0	17.0
	FH-KBC-0550	2.5-5.0						19.0
M6	FH-KBC-0630	0.5-3.0	12.7	9.0	8.9	12.3	1.3	19.2
	FH-KBC-0650	3.0-5.0						21.0
M8	FH-KBC-0830	0.5-3.0	14.8	11.0	10.9	15.0	1.5	21.5
	FH-KBC-0855	3.0-5.5						24.0
M10	FH-KBC-1040	1.0-4.0	19.2	13.0	12.9	17.0	1.6	27.0

RH-KB

小头条纹 Reduce Head Knurled Body

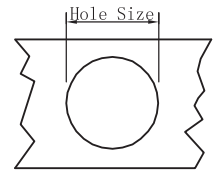
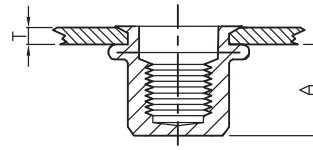
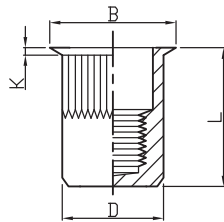


UNIT(单位): mm

螺纹 Thread	编号 P/N	T(GRIP RANGE) Min Max	A Rer	Hole Size $+0.1$ 0	D $+0.07$ -0.1	B	K	L
M3	RH-KB-0320	0.5-2.0	6.2	5.0	4.9	6.0	0.5	9.0
M4	RH-KB-0420 RH-KB-0440	0.5-2.0 2.0-4.0	7.0	6.0	5.9	7.0	0.5	11.2 13.0
M5	RH-KB-0520 RH-KB-0540	0.5-2.0 2.0-4.0	7.0	7.0	6.9	8.0	0.5	11.5 13.0
M6	RH-KB-0625 RH-KB-0650	0.5-2.5 2.5-5.0	8.5	9.0	8.9	10.0	0.6	14.0 16.0
M8	RH-KB-0830 RH-KB-0850	0.5-3.0 3.0-5.0	10.0	11.0	10.9	12.0	0.65	16.5 18.5
M10	RH-KB-1035 RH-KB-1060	1.0-3.5 3.5-6.0	12.5	13.0	12.9	14.0	0.7	19.5 22.0
M10	RH-KB-1035(12H)	1.0-3.5	12.5	12.0	11.9	13.0	0.7	19.5
M12	RH-KB-1240	1.0-4.0	16.2	16.0	15.9	17.6	0.75	24.2

RH-KBC

小头条纹盲孔 Reduce Head Knurled Body Close End



UNIT(单位): mm

螺纹 Thread	编号 P/N	T(GRIP RANGE) Min Max	A Rer	Hole Size $+0.1$ 0	D $+0.07$ -0.1	B	K	L
M4	RH-KBC-0420 RH-KBC-0435	0.5-2.0 2.0-3.5	11.0	6.0	5.9	7.0	0.5	15.0 16.5
M5	RH-KBC-0520 RH-KBC-0535	0.5-2.0 2.0-3.5	12.5	7.0	6.9	8.0	0.5	16.5 18.0
M6	RH-KBC-0630 RH-KBC-0645	0.5-3.0 3.0-4.5	15.5	9.0	8.9	10.0	0.6	20.5 22.0
M8	RH-KBC-0830 RH-KBC-0845	0.5-3.0 3.0-4.5	17.0	11.0	10.9	12.0	0.65	23.0 24.5
M10	RH-KBC-1030 RH-KBC-1050	1.0-3.0 3.0-5.0	18.2	13.0	12.9	14.0	0.7	24.5 26.0

Blind Rivet Nuts

Blind Rivets

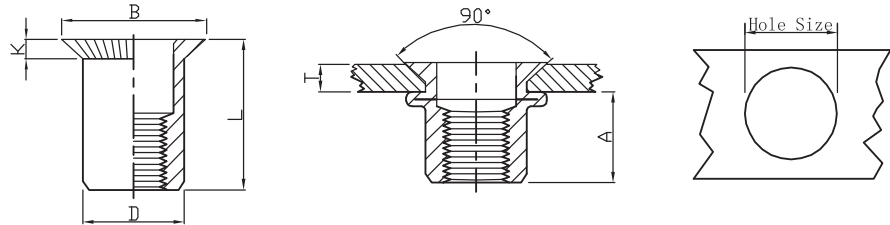
Self-Chinching

Weld Studs

Rivet tools

CH-RB

沉头光身 Countersunk Head Round Body Plain

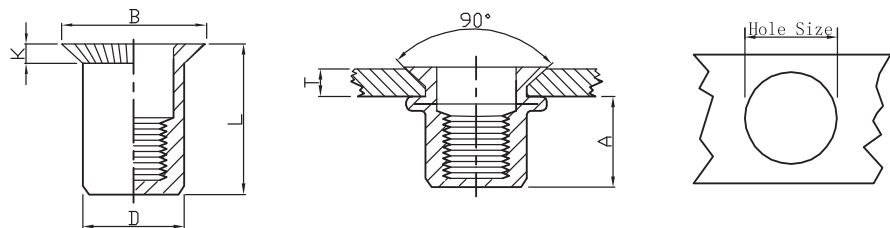


UNIT(单位): mm

螺纹 Thread	编号 P/N	T(GRIP RANGE) Min Max	A Rer	Hole Size $+0.1$ 0	D $+0.07$ -0.1	B	K	L
M4	CH-RB-0430	1.5-3.0	6.5	6.0	5.9	9.0	1.5	12.0
M5	CH-RB-0535	1.5-3.5	7.5	7.0	6.9	10.0	1.5	13.0
M6	CH-RB-0640	1.5-4.0	9.0	9.0	8.9	12.0	1.5	15.5
M8	CH-RB-0845	2.0-4.5	11.0	11.0	10.9	14.0	1.5	18.5
M10	CH-RB-1050	2.0-5.0	13.0	13.0	12.9	16.0	1.5	21.0

CH-RBC

沉头光身盲孔 Countersunk Head Round Body Plain Close End

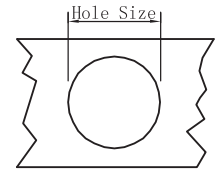
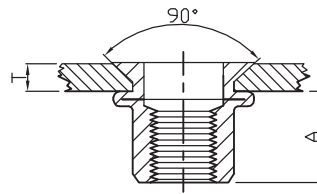
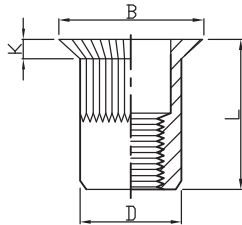


UNIT(单位): mm

螺纹 Thread	编号 P/N	T(GRIP RANGE) Min Max	A Rer	Hole Size $+0.1$ 0	D $+0.07$ -0.1	B	K	L
M4	CH-RBC-0430	1.5-3.0	10.5	6.0	5.9	8.5	1.5	17.5
M5	CH-RBC-0535	1.5-3.5	11.5	7.0	6.9	9.5	1.5	20.0
M6	CH-RBC-0640	1.5-4.0	12.7	9.0	8.9	11.5	1.5	23.0
M8	CH-RBC-0840	1.5-4.0	14.0	11.0	10.9	13.5	1.5	27.0
M10	CH-RBC-1045	2.0-4.5	19.0	13.0	11.9	14.5	1.7	30.0

CH-KB

沉头条纹 Countersunk Head Knurled Body



UNIT(单位): mm

螺纹 Thread	编号 P/N	T(GRIP RANGE) Min Max	A Rer	Hole Size $+0.1$ 0	D $+0.07$ -0.1	B	K	L
M4	CH-KB-0430	1.5-3.0	6.5	6.0	5.9	9.0	1.5	12.0
M5	CH-KB-0535	1.5-3.5	7.5	7.0	6.9	10.0	1.5	13.0
M6	CH-KB-0640	1.5-4.0	9.0	9.0	8.9	12.0	1.5	15.5
M8	CH-KB-0845	2.0-4.5	11.0	11.0	10.9	14.0	1.5	18.5
M10	CH-KB-1050	2.0-5.0	13.0	13.0	12.9	16.0	1.5	21.0
M12	CH-KB-1250(16H)	2.0-5.0	16.5	16.0	15.9	19.0	1.5	24.0

Blind Rivet Nuts

Blind Rivets

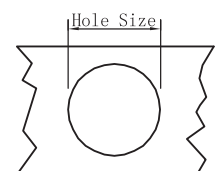
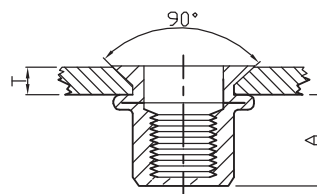
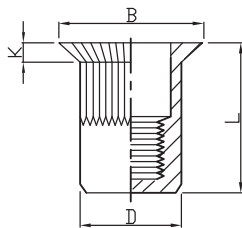
Self-Chinching

Weld Studs

Rivet tools

CH-KBC

沉头条纹盲孔 Countersunk Head Knurled Body Close End

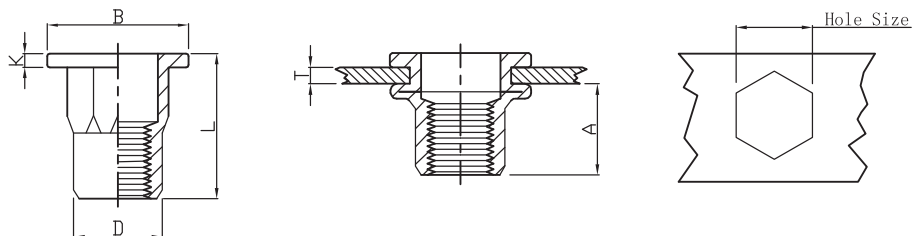


UNIT(单位): mm

螺纹 Thread	编号 P/N	T(GRIP RANGE) Min Max	A Rer	Hole Size $+0.1$ 0	D $+0.07$ -0.1	B	K	L
M4	CH-KBC-0430	1.5-3.0	10.5	6.0	5.9	8.5	1.5	17.5
M5	CH-KBC-0535	1.5-3.5	11.5	7.0	6.9	9.5	1.5	20.0
M6	CH-KBC-0640	1.5-4.0	12.7	9.0	8.9	11.5	1.5	23.0
M8	CH-KBC-0840	1.5-4.0	14.0	11.0	10.9	13.5	1.5	27.0
M10	CH-KBC-1045	2.0-4.5	19.0	13.0	11.9	14.5	1.7	30.0

FH-SHB

平头半六角(内圆外方) Flat Head Semi-Hex Body

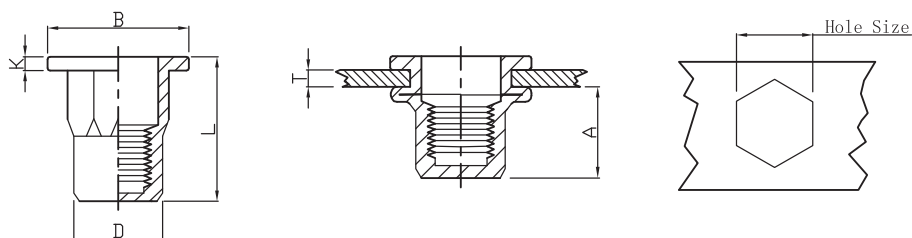


UNIT(单位): mm

螺纹 Thread	编号 P/N	T(GRIP RANGE) Min Max	A Rer	Hole Size $+0.1$ 0	D $+0.07$ -0.1	B	K	L
M4	FH-SHB-0420	0.5-2.0	6.5	6.0	5.9	9.0	0.8	11.0
M5	FH-SHB-0525	0.5-2.5	8.0	7.0	6.9	10.0	1.0	13.0
M6	FH-SHB-0630	0.5-3.0	8.5	9.0	8.9	12.7	1.35	15.0
M8	FH-SHB-0835	1.0-3.5	10.5	11.0	10.9	16.0	1.5	18.0
M10	FH-SHB-1035	1.0-3.5	12.5	13.0	12.9	18.0	1.7	21.0
M12	FH-SHB-1240	1.0-4.0	14.0	15.0	14.9	20.0	1.7	23.0
M10	FH-SHB-1035(12H)	1.0-3.5	11.0	12.0	11.9	17.0	1.6	19.0
M12	FH-SHB-1250(16H)	2.0-5.0	16.5	16.0	15.9	23.0	2.2	27.5

FH-SHBC

平头半六角盲孔(内圆外方) Flat Head Semi-Hex Body Close End

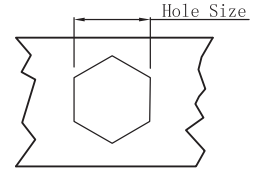
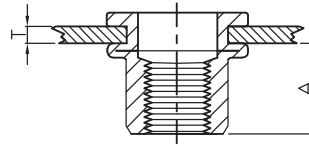
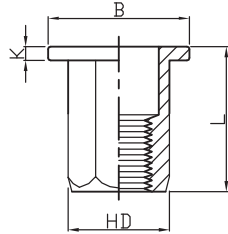


UNIT(单位): mm

螺纹 Thread	编号 P/N	T(GRIP RANGE) Min Max	A Rer	Hole Size $+0.1$ 0	D $+0.07$ -0.1	B	K	L
M4	FH-SHBC-0420	0.5-2.0	11.0	6.0	5.9	9.0	0.8	15.0
M5	FH-SHBC-0525	0.5-2.5	13.5	7.0	6.9	10.0	1.0	18.0
M6	FH-SHBC-0630	0.5-3.0	17.0	9.0	8.9	12.7	1.3	23.0
M8	FH-SHBC-0835	1.0-3.5	19.0	11.0	10.9	16.0	1.5	26.0
M10	FH-SHBC-1040	1.0-4.0	25.0	13.0	12.9	19.0	1.7	33.0

FH-FHB

平头全六角 Flat Head Full Hex Body



UNIT(单位): mm

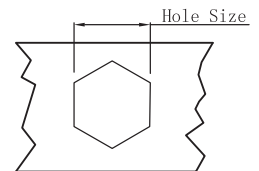
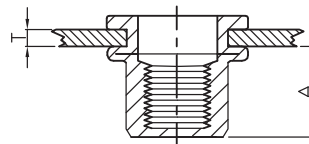
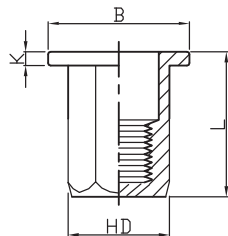
螺纹 Thread	编号 P/N	T(GRIP RANGE) Min Max	A Rer	Hole Size $+0.1$ 0	HD $+0.07$ -0.1	B	K	L
M4	FH-FHB-0420	0.5-2.0	6.5	6.0	5.9	9.0	0.8	11.0
M5	FH-FHB-0525	0.5-2.5	8.0	7.0	6.9	10.0	1.0	14.0
M6	FH-FHB-0630	0.5-3.0	8.5	9.0	8.9	12.7(*13.0)	1.35	15.0(*16.0)
M8	FH-FHB-0835	1.0-3.5	10.5	11.0	10.9	16.0	1.5	18.0
M10	FH-FHB-1035	1.0-3.5	12.5	13.0	12.9	18.0(*19.0)	1.7	21.0(*23.0)
M12	FH-FHB-1240	1.0-4.0	14.0	15.0	14.9	20.0	1.7	23.0
M10	FH-FHB-1035(12H)	1.0-3.5	13.5	12.0	11.9	18.0	1.7	21.0
M12	FH-FHB-1250(16H)	2.0-5.0	16.5	16.0	15.9	23.0	2.0	27.0

※部分为可代替尺寸，客户需要请另做说明

※Part are different series, if customer need this size, please mark.

FH-FHBC

平头全六角盲孔 Flat Head Full Hex Body Close End

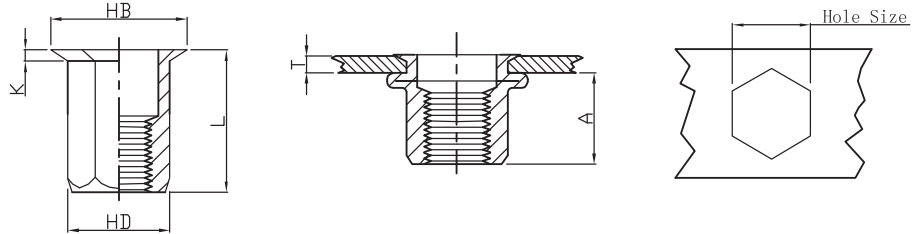


UNIT(单位): mm

螺纹 Thread	编号 P/N	T(GRIP RANGE) Min Max	A Rer	Hole Size $+0.1$ 0	HD $+0.07$ -0.1	B	K	L
M4	FH-FHBC-0420	0.5-2.0	11.0	6.0	5.9	9.0	1.0	15.0
M5	FH-FHBC-0525	0.5-2.5	13.5	7.0	6.9	10.0	1.0	18.0
M6	FH-FHBC-0630	0.5-3.0	17.0	9.0	8.9	12.7	1.5	23.0
M8	FH-FHBC-0835	1.0-3.5	19.0	11.0	10.9	16.0	1.5	26.0
M10	FH-FHBC-1040	1.0-4.0	25.0	13.0	12.9	19.0	2.0	33.0

RHH-FHB

小头全六角 Reduce Hex Head Full-Hex Body

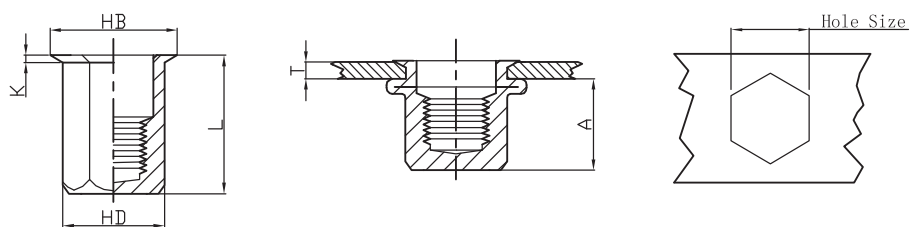


UNIT(单位): mm

螺纹 Thread	编号 P/N	T(GRIP RANGE) Min Max	A Rer	Hole Size $+0.1$ 0	HD $+0.07$ -0.1	B	K	L
M4	RHH-FHB-0425	0.5-2.5	6.7	6.0	5.9	7.0	0.5	11.0
	RHH-FHB-0450	2.5-5.0						13.5
M5	RHH-FHB-0530	0.5-3.0	9.0	7.0	6.9	8.0	0.5	14.5
	RHH-FHB-0550	3.0-5.0						16.0
M6	RHH-FHB-0635	1.0-3.5	10.0	9.0	8.9	10.0	0.6	16.0
	RHH-FHB-0660	3.5-6.0						18.0
M8	RHH-FHB-0840	1.0-4.0	11.5	11.0	10.9	12.0	0.65	18.0
	RHH-FHB-0860	4.0-6.0						20.0
M10	RHH-FHB-1035	1.0-3.5	12.5	13.0	12.9	14.5	0.75	19.0
	RHH-FHB-1060	3.5-6.0						23.5
M12	RHH-FHB-1240	1.0-4.0	15.5	16.0	15.9	17.5	1.0	25.0

RHH-FHBC

小头全六角盲孔 Reduce Hex Head Full-Hex Body Close End

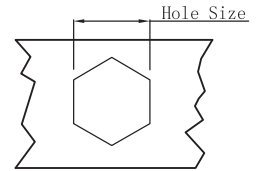
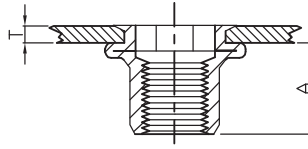
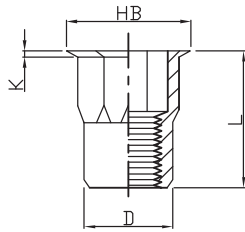


UNIT(单位): mm

螺纹 Thread	编号 P/N	T(GRIP RANGE) Min Max	A Rer	Hole Size $+0.1$ 0	HD $+0.07$ -0.1	B	K	L
M4	RHH-FHBC-0425	0.5-2.5	12.3	6.0	5.9	7.0	0.5	16.0
M5	RHH-FHBC-0530	0.5-3.0	15.2	7.0	6.9	8.0	0.5	20.0
M6	RHH-FHBC-0635	0.5-3.5	14.5	9.0	8.9	10.0	0.6	20.5
M8	RHH-FHBC-0840	1.0-4.0	17.0	11.0	10.9	12.0	0.65	23.0
M10	RHH-FHBC-1045	1.0-4.5	20.0	13.0	12.9	14.5	0.75	28.5

RHH-IHB

小头内外半六角 Reduce Hex Head Inner-Hex Body



UNIT(单位): mm

螺纹 Thread	编号 P/N	T(GRIP RANGE) Min Max	A Rer	Hole Size $+0.1$ 0	D $+0.07$ -0.1	HB	K	L
M4	RHH-IHB-0420	0.5-2.0	8.3	6.0	5.9	7.0	0.5	12.0
M5	RHH-IHB-0525	0.5-2.5	8.7	7.0	6.9	8.0	0.5	13.0
M6	RHH-IHB-0635	1.0-3.5	10.5	9.0	8.9	10.0	0.6	16.0
M8	RHH-IHB-0835	1.0-3.5	11.3	11.0	10.9	12.0	0.65	17.5
M10	RHH-IHB-1040	1.0-4.0	12.8	13.0	12.9	14.5	0.75	21.0
M12	RHH-IHB-1240	1.0-4.0	14.8	16.0	15.9	17.5	1.0	24.0

Blind Rivet Nuts

Blind Rivets

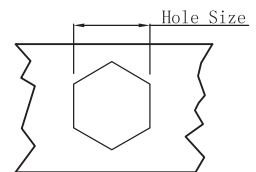
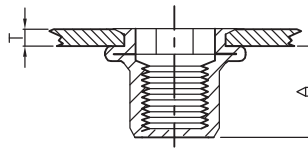
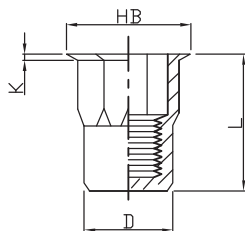
Self-Chinching

Weld Studs

Rivet tools

RHH-IHBC

小头内外半六角盲孔 Reduce Hex Head Inner-Hex Body Close End

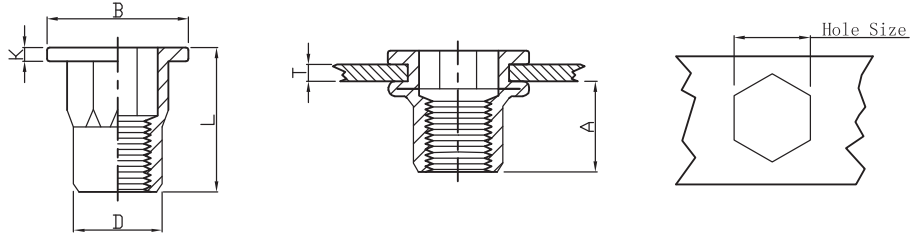


UNIT(单位): mm

螺纹 Thread	编号 P/N	T(GRIP RANGE) Min Max	A Rer	Hole Size $+0.1$ 0	D $+0.07$ -0.1	HB	K	L
M4	RHH-IHBC-0420	0.5-2.0	11.5	6.0	5.9	7.0	0.5	15.5
M5	RHH-IHBC-0525	0.5-2.5	13.5	7.0	6.9	8.0	0.5	18.0
M6	RHH-IHBC-0635	0.5-3.5	15.8	9.0	8.9	10.0	0.6	21.5
M8	RHH-IHBC-0835	1.0-3.5	18.2	11.0	10.9	12.0	0.65	24.0
M10	RHH-IHBC-1040	1.0-4.0	23.2	13.0	12.9	14.5	0.75	30.5

FH-IHB

平头内外半六角 Flat Head Inner-Hex Body



UNIT(单位): mm

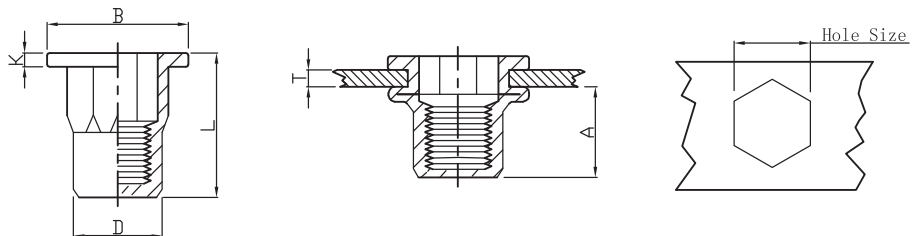
螺纹 Thread	编号 P/N	T(GRIP RANGE)		A Rer	Hole Size $+0.1$ 0	D $+0.07$ -0.1	B	K	L
		Min	Max						
M4	FH-IHB-0420	0.5	2.0	7.0	6.0	5.9	9.0	0.8	11.0
M5	FH-IHB-0525	0.5	2.5	7.5	7.0	6.9	10.0	1.0	12.0
M6	FH-IHB-0630	0.5	3.0	9.2	9.0	8.9	12.7	1.3	15.5
M8	FH-IHB-0835	1.0	3.5	11.2	11.0	10.9	16.0	1.5	18.0
M10	FH-IHB-1035	1.0	3.5	12.8	13.0	12.9	18.0	1.7	21.0

※部分为可代替尺寸，客户需要请另做说明

※Part are different series, if customer need this size, please mark.

FH-IHBC

平头内外半六角盲孔 Flat Head Inner-Hex Body Close End

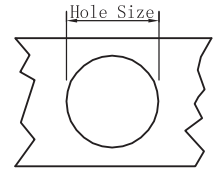
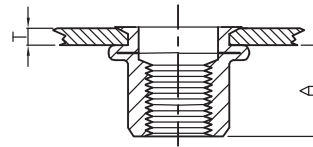
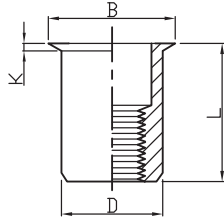


UNIT(单位): mm

螺纹 Thread	编号 P/N	T(GRIP RANGE)		A Rer	Hole Size $+0.1$ 0	D $+0.07$ -0.1	B	K	L
		Min	Max						
M4	FH-IHBC-0420	0.5	2.0	11.5	6.0	5.9	9.0	1.0	16.0
M5	FH-IHBC-0525	0.5	2.5	13.5	7.0	6.9	10.0	1.0	18.5
M6	FH-IHBC-0635	0.5	3.0	17.0	9.0	8.9	12.7	1.5	23.0
M8	FH-IHBC-0835	1.0	3.5	18.2	11.0	10.9	16.0	1.5	25.0
M10	FH-IHBC-1040	1.0	4.0	25.0	13.0	12.9	19.0	1.7	33.0

RH-RB-UK

小头光身 (英标) Reduce Head Round Body Plain-UK



UNIT(单位): mm

螺纹 Thread	编号 P/N	T(GRIP RANGE) Min Max	A Rer	Hole Size $+0.1$ 0	D $\pm 0.05(+0.07)$ -0.17	B	K	L
M3	RH-RB-UK-0315	0.5-1.5	5.5	4.8	4.65	5.4	0.4	9.0
M4	RH-RB-UK-0420	0.5-2.0	6.5	6.4	6.25	7.0	0.5	10.5
M5	RH-RB-UK-0525	0.5-2.5	7.5	7.2	7.05	7.8	0.5	12.0
M6	RH-RB-UK-0630	1.0-3.0	9.2	9.6	9.45	10.3	0.6	15.0
M8	RH-RB-UK-0835	1.0-3.5	10.5	10.6	10.45	11.3	0.6	16.0
M10	RH-RB-UK-1040	1.0-4.0	12.8	12.8	12.65*	13.8	0.65	20.0

Blind Rivet Nuts

Blind Rivets

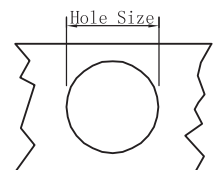
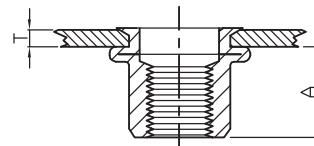
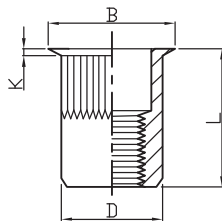
Self-Chinching

Weld Studs

Rivet tools

RH-KB-UK

小头条纹 (英标) Reduce Head Knurled Body-UK

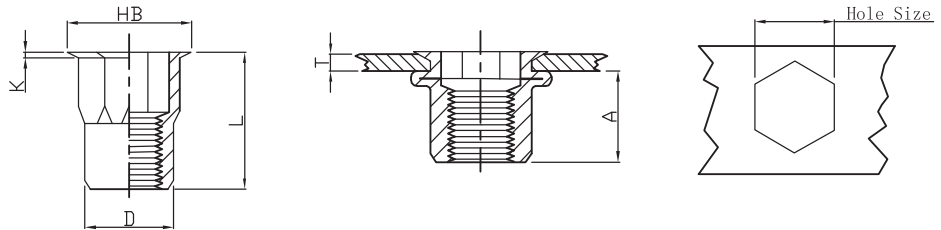


UNIT(单位): mm

螺纹 Thread	编号 P/N	T(GRIP RANGE) Min Max	A Rer	Hole Size $+0.1$ 0	D $\pm 0.05(+0.07)$ -0.17	B	K	L
M3	RH-KB-UK-0315	0.5-1.5	5.5	4.8	4.65	5.4	0.4	9.0
M4	RH-KB-UK-0420	0.5-2.0	6.5	6.5	6.35	7.0	0.5	10.5
M5	RH-KB-UK-0525	0.5-2.5	7.5	7.25	7.15	7.85	0.5	12.0
M6	RH-KB-UK-0630	1.0-3.0	9.2	9.6	9.45	10.3	0.6	15.0
M8	RH-KB-UK-0835	1.0-3.5	10.5	10.6	10.45	11.3	0.6	16.0
M10	RH-KB-UK-1040	1.0-4.0	12.8	12.8	12.65*	13.8	0.65	20.0

RHH-IHB-UK

小头内外半六角 (英标) Reduce Hex Head Inner Hex Body-UK

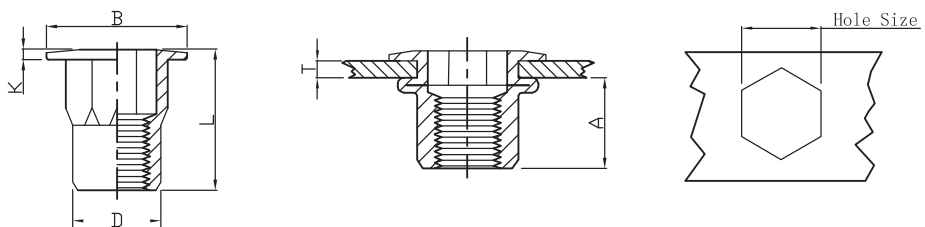


UNIT(单位): mm

螺纹 Thread	编号 P/N	T(GRIP RANGE) Min Max	A Rer	Hole Size $+0.1$ 0	D ± 0.05 (± 0.08)	B	K	L
M4	RHH-IHB-UK-0420	0.5-2.0	6.5	6.4	6.25	7.25	0.5	10.5
M5	RHH-IHB-UK-0525	0.5-2.5	7.5	7.2	7.05	8.1	0.5	12.0*
M6	RHH-IHB-UK-0630	1.0-3.0	9.2	9.6	9.45	10.5*	0.6*	15.0*
M8	RHH-IHB-UK-0835	1.0-3.5	10.5	10.6	10.45	11.5*	0.65*	16.5*

FH-IHB-UK

平头内外半六角 (英标) Flat Head Inner-Hex Body-UK



UNIT(单位): mm

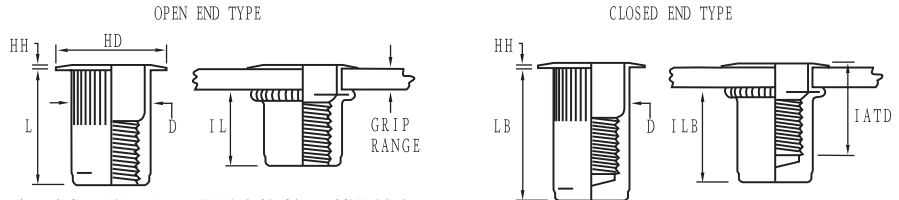
螺纹 Thread	编号 P/N	T(GRIP RANGE) Min Max	A Rer	Hole Size $+0.1$ 0	D ± 0.05 (± 0.08)	B	K	L
M4	FH-IHB-UK-0420	0.5-2.0	6.5	6.4	6.25	9.5	0.6	10.5
M5	FH-IHB-UK-0525	0.5-2.5	7.5	7.2	7.05	10.0	0.8	12.0
M6	FH-IHB-UK-0630	1.0-3.0	9.2	9.6	9.4*	12.95*	1.0*	15.5*
M8	FH-IHB-UK-0835	1.0-3.5	10.5	10.6	10.45*	16.5*	1.15*	18.5*



FH-KB-US

AVK

平头条纹 (美标) Flat Head Knurled Body-AVK



Thread Specifications: Unified 2B/21per ASME B1.1
Metric 6H/21per ASME B1.13M

UNIT(单位): INCH

Thread Size	Thread Call Out	Grip Range	Grip Call Out	Hole Size +0.006 -0.000	HD ±0.010 ±0.205*	HH ±0.003	L ±0.015	D MAX.	IL MAX.	LB ±0.015	ILB MAX.	IATD* MAX.
6-32 UNC	632	.020-.080	80	17/64(.2656)	.390	.030	.420	.265	.305	.740	.640	.610
6-32UNC	632	.080-.130	130	17/64(.2656)	.390	.030	.470	.265	.305	.740	.580	.670
8-32UNC	832	.020-.080	80	17/64(.2656)	.390	.030	.420	.265	.305	.740	.640	.610
8-32UNC	832	.080-.130	130	17/64(.2656)	.390	.030	.470	.265	.305	.740	.580	.670
10-24UNC	1024	.020-.130	130	19/64(.2969)	.415	.030	.475	.296	.315	.990	.845	.730
10-24UNC	1024	.130-.225	225	19/64(.2969)	.415	.030	.585	.296	.315	.990	.735	.840
10-32 UNF	1032	.020-.130	130	19/64(.2969)	.415	.030	.475	.296	.315	.990	.845	.730
10-32 UNF	1032	.130-.225	225	19/64(.2969)	.415	.030	.585	.296	.315	.990	.735	.840
1/4-20 UNC	420	.027-.165	165	25/64(.3906)	.500	.030	.580	.390	.380	1.190	1.005	.895
1/4-20 UNC	420	.165-.260	260	25/64(.3906)	.500	.030	.680	.390	.380	1.190	.905	1.035
5/16-18 UNC	518	.027-.150	150	17/32(.5312)	.685*	.035	.690	.530	.470	1.390	1.175	.995
5/16-18 UNC	518	.150-.312	312	17/32(.5312)	.685*	.035	.805	.530	.425	1.390	1.025	1.120
3/8-16 UNC	616	.027-.150	150	17/32(.5312)	.685*	.035	.690	.530	.470	1.390	1.175	.995
3/8-16 UNC	616	.150-.312	312	17/32(.5312)	.685*	.035	.805	.530	.425	1.390	1.025	1.120
1/2-13 UNC	813	.063-.200	200	11/16(.6875)	.865*	.047	1.150	.685	.850	2.365	2.070	1.505
1/2-13 UNC	813	.200-.350	350	11/16(.6875)	.865*	.047	1.300	.685	.850	2.365	1.920	1.505
1/2-13 UNC	813	.365-.500	500	11/16(.6875)	.865*	.047	1.450	.685	.860	2.365	1.770	1.505

※不锈钢材质尺寸同上 Stainless steel dimension same as steel dimension

UNIT(单位): mm

Thread Size	Thread Call Out	Grip Range	Grip Call Out	Hole Size +0.15 -0.000	HD ±0.25 ±0.64*	HH ±0.008	L ±0.38	D MAX.	IL MAX.	LB ±0.38	ILB MAX.	IATD* MAX.
M4x0,7 ISO	470	0,50-2,00	2.0	6,75	9,91	0,76	10,67	6,73	7,75	18,80	16,26	15,49
M4x0,7 ISO	470	2,00-3,30	3.3	6,75	9,91	0,76	11,94	6,73	7,75	18,80	14,73	17,02
M5x0,8 ISO	580	0,50-3,30	3.3	7,60	10,54	0,76	12,07	7,52	8,00	25,15	21,46	18,54
M5x0,8 ISO	580	3,30-5,70	5.7	7,60	10,54	0,76	14,86	7,52	8,00	25,15	18,67	21,34
M6x1,0 ISO	610	0,70-4,20	4.2	10,00	12,70	0,76	14,73	9,91	9,65	30,23	25,53	22,73
M6x1,0 ISO	610	4,20-6,60	6.6	10,00	12,70	0,76	17,27	9,91	9,65	30,23	22,99	26,29
M8x1,25 ISO	8125	0,70-3,80	3.8	13,50	17,40*	0,89	17,53	13,46	11,94	35,31	29,85	25,27
M8x1,25 ISO	8125	3,80-7,90	7.9	13,50	17,40*	0,89	20,45	13,46	10,80	35,31	26,04	28,45
M10x1,5 ISO	1015	0,70-3,80	3.8	13,50	17,40*	0,89	17,53	13,46	11,94	35,31	29,85	25,27
M10x1,5 ISO	1015	3,80-7,90	7.9	13,50	17,40*	0,89	20,45	13,46	10,80	35,31	26,04	28,45
M12x1,75 ISO	12175	1,60-5,10	5.1	17,45	21,97*	1,19	29,21	17,4	21,59	60,07	52,58	38,23
M12x1,75 ISO	12175	5,10-8,90	8.9	17,45	21,97*	1,19	33,02	17,4	21,59	60,07	48,77	38,23
M12x1,75 ISO	12175	8,90-12,7	12.7	17,45	21,97*	1,19	36,83	17,4	21,84	60,07	44,96	38,23

※不锈钢材质尺寸同上 Stainless steel dimension same as steel dimension

Blind Rivet Nuts

Blind Rivets

Self-Chinching

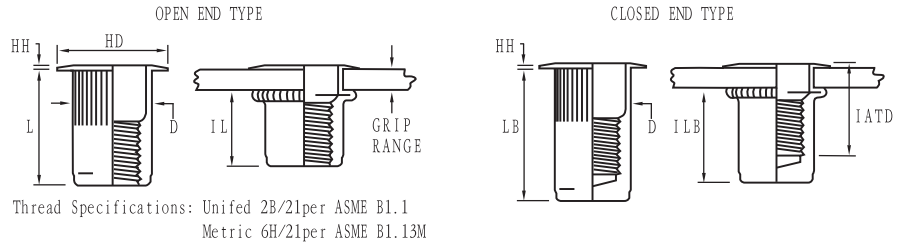
Weld Studs

Rivet tools

SFH-KB-US

AVK

小头条纹 (美标) Small Flat Head Knurled Body-AVK



UNIT(单位): INCH

Thread Size	Thread Call Out	Grip Range	Grip Call Out	Hole Size $^{+0.006}_{-0.000}$	HD ± 0.010	HH ± 0.002	L ± 0.015	D MAX.	IL MAX.	LB ± 0.015	ILB MAX.	IATD* MAX.
6-32 UNC	632	.020-.080	80	17/64(.2656)	.310	.019	.420	.265	.305	.740	.640	.610
6-32 UNC	632	.080-.130	130	17/64(.2656)	.310	.019	.470	.265	.305	.740	.580	.670
8-32 UNC	832	.020-.080	80	17/64(.2656)	.310	.019	.420	.265	.305	.740	.640	.610
8-32 UNC	832	.080-.130	130	17/64(.2656)	.310	.019	.470	.265	.305	.740	.580	.670
10-24 UNC	1024	.020-.130	130	19/64(.2969)	.340	.019	.475	.296	.315	.990	.845	.730
10-24 UNC	1024	.130-.225	225	19/64(.2969)	.340	.019	.585	.296	.315	.990	.735	.840
10-32 UNF	1032	.020-.130	130	19/64(.2969)	.340	.019	.475	.296	.315	.990	.845	.730
10-32 UNF	1032	.130-.225	225	19/64(.2969)	.340	.019	.585	.296	.315	.990	.735	.840
1/4-20 UNC	420	.027-.165	165	25/64(.3906)	.455	.022	.580	.390	.380	1.190	1.005	.895
1/4-20 UNC	420	.165-.260	260	25/64(.3906)	.455	.022	.680	.390	.380	1.190	.905	1.035
5/16-18 UNC	518	.027-.150	150	17/32(.5312)	.595	.022	.690	.530	.470	1.390	1.175	.995
5/16-18 UNC	518	.150-.312	312	17/32(.5312)	.595	.022	.805	.530	.425	1.390	1.025	1.120
3/8-16 UNC	616	.027-.150	150	17/32(.5312)	.595	.022	.690	.530	.470	1.390	1.175	.995
3/8-16 UNC	616	.150-.312	312	17/32(.5312)	.595	.022	.805	.530	.425	1.390	1.025	1.120

※不锈钢材质尺寸同上 Stainless steel dimension same as steel dimension

UNIT(单位): mm

Thread Size	Thread Call Out	Grip Range	Grip Call Out	Hole Size $^{+0.15}_{-0.00}$	HD ± 0.25	HH ± 0.05	L ± 0.38	D MAX.	IL MAX.	LB ± 0.38	ILB MAX.	IATD* MAX.
M4x0,7 ISO	470	0,50-2,00	2.0	6,75	7,87	0,48	10,67	6,73	7,75	18,80	16,26	15,49
M4x0,7 ISO	470	2,00-3,30	3.3	6,75	7,87	0,48	11,94	6,73	7,75	18,80	14,73	17,02
M5x0,8 ISO	580	0,50-3,30	3.3	7,60	8,64	0,48	12,07	7,52	8,00	25,15	21,46	18,54
M5x0,8 ISO	580	3,30-5,70	5.7	7,60	8,64	0,48	14,86	7,52	8,00	25,15	18,67	21,34
M6x1,0 ISO	610	0,70-4,20	4.2	10,00	11,56	0,55	14,73	9,91	9,65	30,23	25,53	22,73
M6x1,0 ISO	610	4,20-6,60	6.6	10,00	11,56	0,55	17,27	9,91	9,65	30,23	22,99	26,29
M8x1,25 ISO	8125	0,70-3,80	3.8	13,50	15,11	0,55	17,53	13,46	11,94	35,31	29,85	25,27
M8x1,25 ISO	8125	3,80-7,90	7.9	13,50	15,11	0,55	20,45	13,46	10,80	35,31	26,04	28,45
M10x1,5 ISO	1015	0,70-3,80	3.8	13,50	15,11	0,55	17,53	13,46	11,94	35,31	29,85	25,27
M10x1,5 ISO	1015	3,80-7,90	7.9	13,50	15,11	0,55	20,45	13,46	10,80	35,31	26,04	28,45

※不锈钢材质尺寸同上 Stainless steel dimension same as steel dimension

Blind Rivet Nuts

Blind Rivets

Self-Chinching

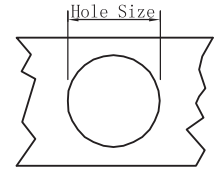
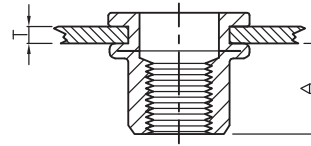
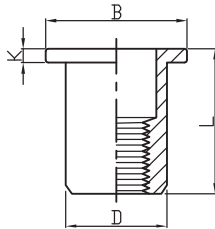
Weld Studs

Rivet tools

FH-RB/SS

Stainless Steel

A2平头光身 Flat Head Round Body



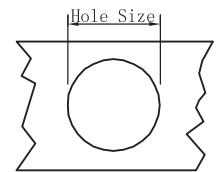
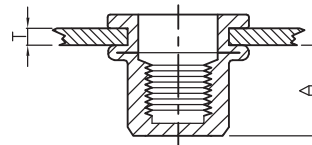
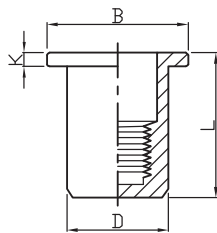
UNIT(单位): mm

螺纹 Thread	编号 P/N	T(GRIP RANGE) Min Max	A Rer	Hole Size $+0.1$ 0	D $+0.07$ -0.1	B	K	L
M3	FH-RB/SS-0320	0.5-2.0	4.5	5.0	4.9	7.0	0.8	8.8
M3	FH-RB/SS-0330	2.0-3.0	6.2	5.0	4.9	7.0	0.8	10.5
M4	FH-RB/SS-0420	0.5-2.0	6.0	6.0	5.9	9.0	0.8	10.8
M4	FH-RB/SS-0440	2.0-4.0	8.0	6.0	5.9	9.0	0.8	13.0
M5	FH-RB/SS-0525	0.5-2.5	7.0	7.0	6.9	10.0	1.0	13.0
M5	FH-RB/SS-0545	2.5-4.5	9.5	7.0	6.9	10.0	1.0	15.5
M6	FH-RB/SS-0630	0.5-3.0	8.5	9.0	8.9	13.0	1.5	15.0
M6	FH-RB/SS-0650	3.0-5.0	11.0	9.0	8.9	13.0	1.5	17.5
M8	FH-RB/SS-0835	0.5-3.5	11.0	11.0	10.9	15.0	1.5	18.0
M8	FH-RB/SS-0860	3.5-6.0	14.0	11.0	10.9	15.0	1.5	21.0
M10	FH-RB/SS-1035	1.0-3.5	12.0	13.0	12.9	17.0	1.8	20.3
M10	FH-RB/SS-1055	3.5-5.5	15.7	13.0	12.9	17.0	1.8	24.0
M12(16H)	FH-RB/SS-1235	1.0-3.5	16.0	16.0	15.9	19.0	1.8	22.0
M12(16H)	FH-RB/SS-1255	3.5-5.5	18.0	16.0	15.9	19.0	1.8	24.3
M12	FH-RB/SS-1235(16H)	1.0-3.5	16.0	15.0	14.9	19.0	1.8	22.0
M12	FH-RB/SS-1255(16H)	3.5-5.5	18.0	15.0	14.9	19.0	1.8	24.3

FH-RBC/SS

Stainless Steel

A2平头光身盲孔 Flat Head Round Body Close End



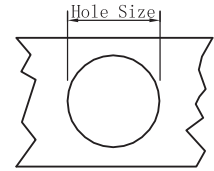
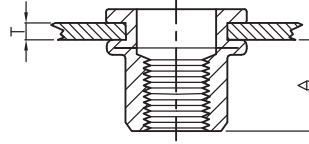
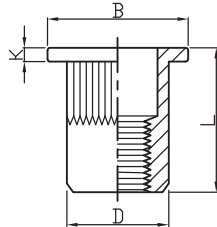
UNIT(单位): mm

螺纹 Thread	编号 P/N	T(GRIP RANGE) Min Max	A Rer	Hole Size $+0.1$ 0	D $+0.07$ -0.1	B	K	L
M4	FH-RBC/SS-0420	0.5-2.0	12.0	6.0	5.9	9.0	0.8	16.5
M4	FH-RBC/SS-0425	1.0-2.5	12.8	6.0	5.9	9.0	0.8	17.3
M5	FH-RBC/SS-0525	0.5-2.5	13.0	7.0	6.9	10.0	1.0	18.0
M5	FH-RBC/SS-0540	2.5-4.0	14.5	7.0	6.9	10.0	1.0	19.5
M6	FH-RBC/SS-0630	0.5-3.0	17.0	9.0	8.9	13.0	1.5	20.5
M6	FH-RBC/SS-0655	3.0-5.5	20.0	9.0	8.9	13.0	1.5	23.5
M8	FH-RBC/SS-0835	0.5-3.5	21.5	11.0	10.9	15.0	1.5	25.5
M8	FH-RBC/SS-0860	3.5-6.0	24.0	11.0	10.9	15.0	1.5	28.0
M10	FH-RBC/SS-1035	0.5-3.5	26.0	13.0	12.9	17.0	1.8	29.0
M10	FH-RBC/SS-1060	3.5-6.0	31.3	13.0	12.9	17.0	1.8	34.3
M12	FH-RBC/SS-1230	0.5-3.0	29.5	16.0	15.9	23.0	2.0	39.0

FH-KB/SS

Stainless Steel

A2平头条纹 Flat Head Knurled Body



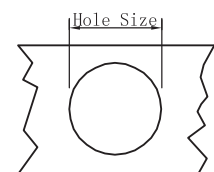
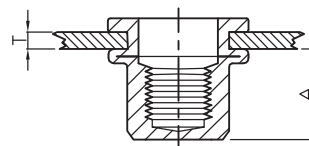
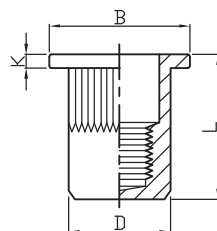
UNIT(单位): mm

螺纹 Thread	编号 P/N	T(GRIP RANGE) Min Max	A Rer	Hole Size $+0.1$ 0	D $+0.07$ -0.1	B	K	L
M3	FH-KB/SS-0320	0.5-2.0	4.5	5.0	4.9	7.0	0.8	8.8
M3	FH-KB/SS-0330	2.0-3.0	6.2	5.0	4.9	7.0	0.8	10.5
M4	FH-KB/SS-0420	0.5-2.0	6.0	6.0	5.9	9.0	0.8	10.8
M4	FH-KB/SS-0440	2.0-4.0	8.0	6.0	5.9	9.0	0.8	13.0
M5	FH-KB/SS-0525	0.5-2.5	7.0	7.0	6.9	10.0	1.0	13.0
M5	FH-KB/SS-0545	2.5-4.5	9.5	7.0	6.9	10.0	1.0	15.5
M6	FH-KB/SS-0630	0.5-3.0	8.5	9.0	8.9	13.0	1.5	15.0
M6	FH-KB/SS-0650	3.0-5.0	11.0	9.0	8.9	13.0	1.5	17.5
M8	FH-KB/SS-0835	0.5-3.5	11.0	11.0	10.9	15.0	1.5	18.0
M8	FH-KB/SS-0860	3.5-6.0	14.0	11.0	10.9	15.0	1.5	21.0
M10	FH-KB/SS-1035	1.0-3.5	12.0	13.0	12.9	17.0	1.8	20.3
M10	FH-KB/SS-1055	3.5-5.5	15.7	13.0	12.9	17.0	1.8	24.0
M12(16H)	FH-KB/SS-1235	1.0-3.5	16.0	16.0	15.9	19.0	1.8	22.0
M12(16H)	FH-KB/SS-1255	3.5-5.5	18.0	16.0	15.9	19.0	1.8	24.3
M12	FH-KB/SS-1235(15H)	1.0-3.5	16.0	15.0	14.9	19.0	1.8	22.0
M12	FH-KB/SS-1255(15H)	3.5-5.5	18.0	15.0	14.9	19.0	1.8	24.3

FH-KBC/SS

Stainless Steel

A2平头条纹盲孔 Flat Head Knurled Body Close End



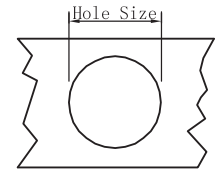
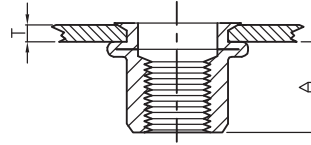
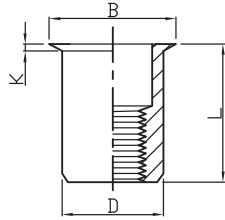
UNIT(单位): mm

螺纹 Thread	编号 P/N	T(GRIP RANGE) Min Max	A Rer	Hole Size $+0.1$ 0	D $+0.07$ -0.1	B	K	L
M4	FH-KBC/SS-0420	0.5-2.0	12.0	6.0	5.9	9.0	0.8	16.5
M4	FH-KBC/SS-0425	1.0-2.5	12.8	6.0	5.9	9.0	0.8	17.3
M5	FH-KBC/SS-0525	0.5-2.5	13.0	7.0	6.9	10.0	1.0	18.0
M5	FH-KBC/SS-0540	2.5-4.0	14.5	7.0	6.9	10.0	1.0	19.5
M6	FH-KBC/SS-0630	0.5-3.0	17.0	9.0	8.9	13.0	1.5	20.5
M6	FH-KBC/SS-0655	3.0-5.5	20.0	9.0	8.9	13.0	1.5	23.5
M8	FH-KBC/SS-0835	0.5-3.5	21.5	11.0	10.9	15.0	1.5	25.5
M8	FH-KBC/SS-0860	3.5-6.0	24.0	11.0	10.9	15.0	1.5	28.0
M10	FH-KBC/SS-1035	0.5-3.5	26.0	13.0	12.9	17.0	1.8	29.0
M10	FH-KBC/SS-1060	3.5-6.0	31.3	13.0	12.9	17.0	1.8	34.3
M12	FH-KBC/SS-1230	0.5-3.0	29.5	16.0	15.9	23.0	2.0	39.0

RH-RB/SS

Stainless Steel

A2 小头光身 Reduce Head Round Body



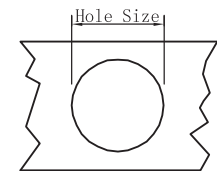
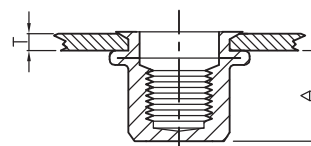
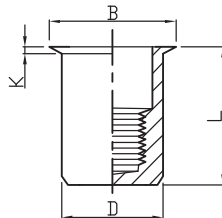
UNIT(单位): mm

螺纹 Thread	编号 P/N	T(GRIP RANGE) Min Max	A Rer	Hole Size $+0.1$ 0	D $+0.07$ -0.1	B	K	L
M3	RH-RB/SS-0315	0.5-1.5	5.0	5.0	4.9	5.5	0.35	8.5
M3	RH-RB/SS-0325	1.5-2.5	6.0	5.0	4.9	5.5	0.35	9.5
M4	RH-RB/SS-0415	0.5-1.5	5.5	6.0	5.9	7.0	0.50	10.0
M4	RH-RB/SS-0425	1.5-2.5	6.5	6.0	5.9	7.0	0.50	11.0
M5	RH-RB/SS-0520	0.5-2.0	6.0	7.0	6.9	8.0	0.60	12.0
M5	RH-RB/SS-0535	2.0-3.5	7.5	7.0	6.9	8.0	0.60	13.5
M6	RH-RB/SS-0630	0.5-3.0	9.0	9.0	8.9	10.0	0.60	14.5
M6	RH-RB/SS-0645	3.0-4.5	10.5	9.0	8.9	10.0	0.60	16.0
M8	RH-RB/SS-0835	0.5-3.5	10.0	11.0	10.9	12.3	0.60	16.5
M8	RH-RB/SS-0850	3.5-5.0	11.5	11.0	10.9	12.3	0.60	18.0
M10	RH-RB/SS-1035	0.5-3.5	12.0	13.0	12.9	14.5	0.85	19.0
M12	RH-RB/SS-1235	0.5-3.5	14.5	15.0	14.9	16.5	0.85	22.5

RH-RBC/SS

Stainless Steel

A2 小头光身盲孔 Reduce Head Round Body Close End



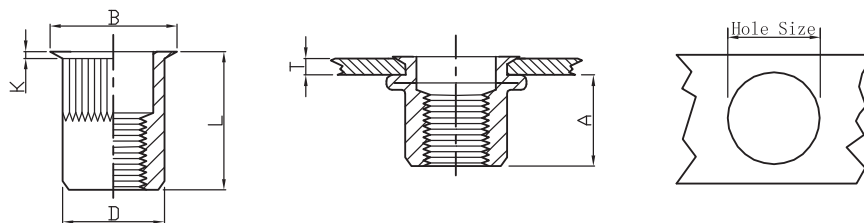
UNIT(单位): mm

螺纹 Thread	编号 P/N	T(GRIP RANGE) Min Max	A Rer	Hole Size $+0.1$ 0	D $+0.07$ -0.1	B	K	L
M4	RH-RBC/SS-0420	0.5-2.0	12.5	6.0	5.9	7.0	0.50	16.5
M5	RH-RBC/SS-0525	0.5-2.5	13.5	7.0	6.9	8.0	0.60	18.5
M6	RH-RBC/SS-0630	0.5-3.0	17.0	9.0	8.9	10.0	0.60	23.0
M8	RH-RBC/SS-0835	0.5-3.5	19.5	11.0	10.9	12.3	0.60	26.5
M10	RH-RBC/SS-1035	0.5-3.5	25.5	13.0	12.9	14.5	0.85	33.0
M12	RH-RBC/SS-1240	2.0-4.0	20.0	15.0	14.9	16.5	0.85	28.0

RH-KB/SS

Stainless Steel

A2小头条纹 Reduce Head Knurled Body



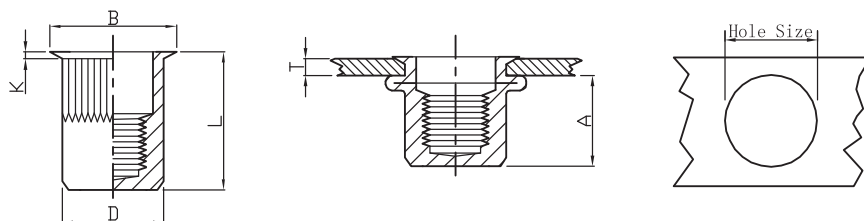
UNIT(单位): mm

螺纹 Thread	编号 P/N	T(GRIP RANGE) Min Max	A Rer	Hole Size $+0.1$ 0	D $+0.07$ -0.1	B	K	L
M3	RH-KB/SS-0315	0.5-1.5	5.0	5.0	4.9	5.5	0.35	8.5
M3	RH-KB/SS-0325	1.5-2.5	6.0	5.0	4.9	5.5	0.35	9.5
M4	RH-KB/SS-0415	0.5-1.5	5.5	6.0	5.9	7.0	0.50	10.0
M4	RH-KB/SS-0425	1.5-2.5	6.5	6.0	5.9	7.0	0.50	11.0
M5	RH-KB/SS-0520	0.5-2.0	6.0	7.0	6.9	8.0	0.60	12.0
M5	RH-KB/SS-0535	2.0-3.5	7.5	7.0	6.9	8.0	0.60	13.5
M6	RH-KB/SS-0630	0.5-3.0	9.0	9.0	8.9	10.0	0.60	14.5
M6	RH-KB/SS-0645	3.0-4.5	10.5	9.0	8.9	10.0	0.60	16.0
M8	RH-KB/SS-0835	0.5-3.5	10.0	11.0	10.9	12.3	0.60	16.5
M8	RH-KB/SS-0850	3.5-5.0	11.5	11.0	10.9	12.3	0.60	18.0
M10	RH-KB/SS-1035	0.5-3.5	12.0	13.0	12.9	14.5	0.85	19.0
M12	RH-KB/SS-1235	0.5-3.5	14.5	15.0	14.9	16.5	0.85	22.5

RH-KBC/SS

Stainless Steel

A2小头条纹盲孔 Reduce Head Knurled Body Close End



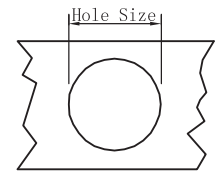
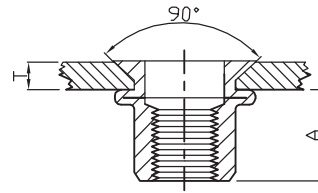
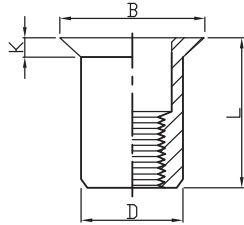
UNIT(单位): mm

螺纹 Thread	编号 P/N	T(GRIP RANGE) Min Max	A Rer	Hole Size $+0.1$ 0	D $+0.07$ -0.1	B	K	L
M4	RH-KBC/SS-0420	0.5-2.0	12.5	6.0	5.9	7.0	0.50	16.5
M5	RH-KBC/SS-0525	0.5-2.5	13.5	7.0	6.9	8.0	0.60	18.5
M6	RH-KBC/SS-0630	0.5-3.0	17.0	9.0	8.9	10.0	0.60	23.0
M8	RH-KBC/SS-0835	0.5-3.5	19.5	11.0	10.9	12.3	0.60	26.5
M10	RH-KBC/SS-1035	0.5-3.5	25.5	13.0	12.9	14.5	0.85	33.0
M12	RH-KBC/SS-1240	2.0-4.0	20.0	15.0	14.9	16.5	0.85	28.0

CH-RB/SS

Stainless Steel

A2沉头光身 Countersunk Head Round Body Plain



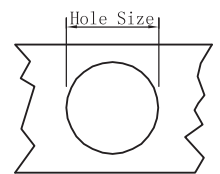
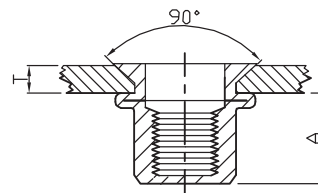
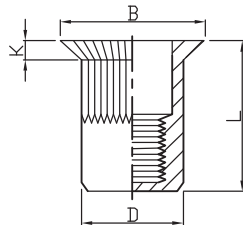
UNIT(单位): mm

螺纹 Thread	编号 P/N	T(GRIP RANGE) Min Max	A Rer	Hole Size $+0.1$ 0	D $+0.07$ -0.1	B	K	L
M3	CH-RB/SS-0330	1.6-3.0	5.0	5.0	4.9	7.8	1.5	9.5
M3	CH-RB/SS-0340	3.0-4.0	6.0	5.0	4.9	7.8	1.5	10.5
M4	CH-RB/SS-0435	1.6-3.5	6.0	6.0	5.9	9.0	1.5	11.0
M4	CH-RB/SS-0450	3.5-5.0	8.0	6.0	5.9	9.0	1.5	13.0
M5	CH-RB/SS-0535	1.6-3.5	8.0	7.0	6.9	10.0	1.5	14.0
M5	CH-RB/SS-0550	3.5-5.0	9.0	7.0	6.9	10.0	1.5	15.0
M6	CH-RB/SS-0640	1.6-4.0	9.0	9.0	8.9	12.0	1.5	15.0
M6	CH-RB/SS-0660	4.0-6.0	11.0	9.0	8.9	12.0	1.5	17.0
M8	CH-RB/SS-0845	1.6-4.5	10.0	11.0	10.9	14.0	1.5	16.5
M8	CH-RB/SS-0860	4.5-6.0	12.5	11.0	10.9	14.0	1.5	19.0
M10	CH-RB/SS-1045	1.6-4.5	11.0	13.0	12.9	16.0	1.7	19.0
M10	CH-RB/SS-1060	4.5-6.0	12.5	13.0	12.9	16.0	1.7	20.5
M12	CH-RB/SS-1250	1.6-5.0	13.5	15.0	14.9	18.0	1.8	22.5

CH-RBC/SS

Stainless Steel

A2沉头光身盲孔 Countersunk Head Round Body Plain Close End



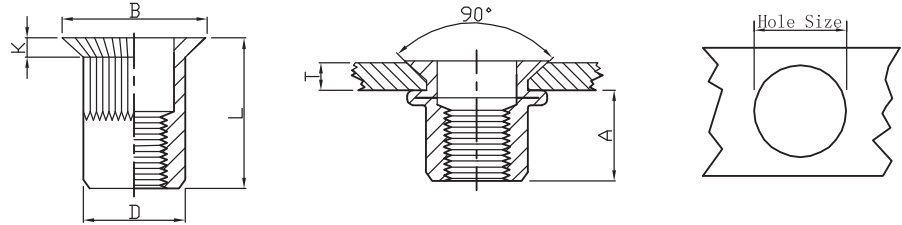
UNIT(单位): mm

螺纹 Thread	编号 P/N	T(GRIP RANGE) Min Max	A Rer	Hole Size $+0.1$ 0	D $+0.07$ -0.1	B	K	L
M4	CH-RBC/SS-0435	1.6-3.5	12.3	6.0	5.9	9.0	1.5	17.3
M5	CH-RBC/SS-0535	1.6-3.5	13.5	7.0	6.9	10.0	1.5	19.5
M6	CH-RBC/SS-0640	1.6-4.0	17.5	9.0	8.9	12.0	1.5	23.5
M8	CH-RBC/SS-0845	1.6-4.5	20.0	11.0	10.9	14.0	1.5	26.5
M10	CH-RBC/SS-1050	1.6-5.0	25.5	13.0	12.9	16.0	1.7	33.0
M12	CH-RBC/SS-1235	1.6-3.5	29.5	16.0	15.9	19.0	1.8	38.0

CH-KB/SS

Stainless Steel

A2 沉头条纹 Countersunk Head Knurled Body



UNIT(单位): mm

螺纹 Thread	编号 P/N	T(GRIP RANGE) Min Max	A Rer	Hole Size $+0.1$ 0	D $+0.07$ -0.1	B	K	L
M3	CH-KB/SS-0330	1.6-3.0	5.0	5.0	4.9	7.8	1.5	9.5
M3	CH-KB/SS-0340	3.0-4.0	6.0	5.0	4.9	7.8	1.5	10.5
M4	CH-KB/SS-0435	1.6-3.5	6.0	6.0	5.9	9.0	1.5	11.0
M4	CH-KB/SS-0450	3.5-5.0	8.0	6.0	5.9	9.0	1.5	13.0
M5	CH-KB/SS-0535	1.6-3.5	8.0	7.0	6.9	10.0	1.5	14.0
M5	CH-KB/SS-0550	3.5-5.0	9.0	7.0	6.9	10.0	1.5	15.0
M6	CH-KB/SS-0640	1.6-4.0	9.0	9.0	8.9	12.0	1.5	15.0
M6	CH-KB/SS-0660	4.0-6.0	11.0	9.0	8.9	12.0	1.5	17.0
M8	CH-KB/SS-0845	1.6-4.5	10.0	11.0	10.9	14.0	1.5	16.5
M8	CH-KB/SS-0860	4.5-6.0	12.5	11.0	10.9	14.0	1.5	19.0
M10	CH-KB/SS-1045	1.6-4.5	11.0	13.0	12.9	16.0	1.7	19.0
M10	CH-KB/SS-1060	4.5-6.0	12.5	13.0	12.9	16.0	1.7	20.5
M12	CH-KB/SS-1250	1.6-5.0	13.5	15.0	14.9	18.0	1.8	22.5

Blind Rivet Nuts

Blind Rivets

Self-Chinching

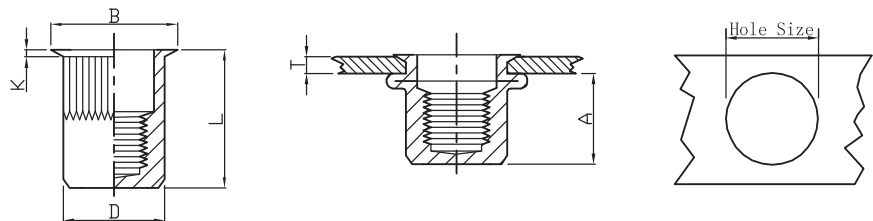
Weld Studs

Rivet tools

CH-KBC/SS

Stainless Steel

A2 沉头条纹盲孔 Countersunk Knurled Body Close End



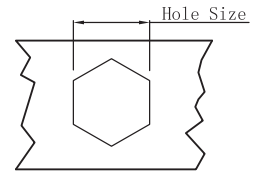
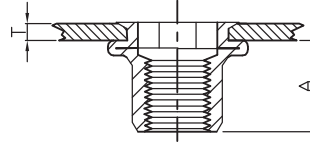
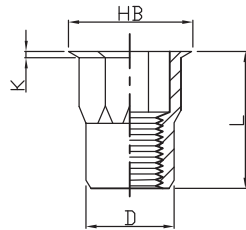
UNIT(单位): mm

螺纹 Thread	编号 P/N	T(GRIP RANGE) Min Max	A Rer	Hole Size $+0.1$ 0	D $+0.07$ -0.1	B	K	L
M4	CH-KBC/SS-0435	1.6-3.5	12.3	6.0	5.9	9.0	1.5	17.3
M5	CH-KBC/SS-0535	1.6-3.5	13.5	7.0	6.9	10.0	1.5	19.5
M6	CH-KBC/SS-0640	1.6-4.0	17.5	9.0	8.9	12.0	1.5	23.5
M8	CH-KBC/SS-0845	1.6-4.5	20.0	11.0	10.9	14.0	1.5	26.5
M10	CH-KBC/SS-1050	1.6-5.0	25.5	13.0	12.9	16.0	1.7	33.0
M12	CH-KBC/SS-1235	1.6-3.5	29.5	16.0	15.9	19.0	1.8	38.0

RHH-IHB/SS

Stainless Steel

A2 小头半六角 Reduce Hex Head Inner-Hex Body



UNIT(单位): mm

螺纹 Thread	编号 P/N	T(GRIP RANGE) Min Max	A Rer	Hole Size $+0.1$ 0	D $+0.07$ -0.1	HB	K	L
M3	RHH-IHB/SS-0315	0.5-1.5	5.0	5.0	4.9	6.0	0.5	8.5
M4	RHH-IHB/SS-0420	0.5-2.0	6.0	6.0	5.9	7.0	0.6	10.0
M4	RHH-IHB/SS-0435	2.0-3.5	8.0	6.0	5.9	7.0	0.6	12.0
M5	RHH-IHB/SS-0525	0.5-2.5	7.0	7.0	6.9	8.0	0.6	12.0
M5	RHH-IHB/SS-0540	2.5-4.0	9.0	7.0	6.9	8.0	0.6	14.0
M6	RHH-IHB/SS-0630	0.5-3.0	9.0	9.0	8.9	10.0	0.6	14.5
M6	RHH-IHB/SS-0650	3.0-5.0	10.5	9.0	8.9	10.0	0.6	16.0
M8	RHH-IHB/SS-0835	0.5-3.5	10.0	11.0	10.9	12.5	0.6	16.5
M8	RHH-IHB/SS-0850	3.5-5.0	11.5	11.0	10.9	12.5	0.6	18.0
M10	RHH-IHB/SS-1035	0.5-3.5	12.5	13.0	12.9	14.3	0.85	19.0
M10	RHH-IHB/SS-1050	3.5-5.0	16.3	13.0	12.9	14.3	0.85	22.8
M12	RHH-IHB/SS-1242	0.5-4.2	14.5	16.0	15.9	17.5	0.85	23.0

Blind Rivet Nuts

Blind Rivets

Self-Chinching

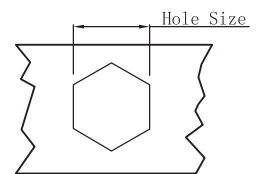
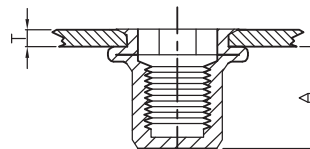
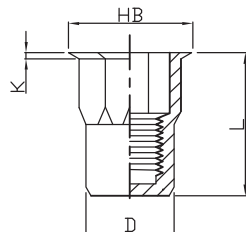
Weld Studs

Rivet tools

RHH-IHBC/SS

Stainless Steel

A2 小头半六角盲孔 Reduce Hex Head Inner-Hex Body Close End



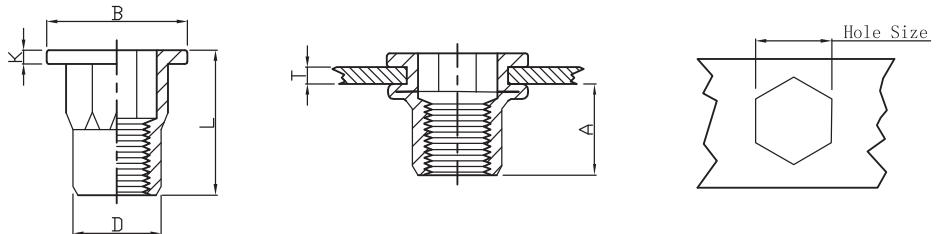
UNIT(单位): mm

螺纹 Thread	编号 P/N	T(GRIP RANGE) Min Max	A Rer	Hole Size $+0.1$ 0	D $+0.07$ -0.1	HB	K	L
M4	RHH-IHBC/SS-0420	0.5-2.0	13.0	6.0	5.9	7.0	0.5	16.5
M5	RHH-IHBC/SS-0525	0.5-2.5	14.5	7.0	6.9	8.0	0.6	18.5
M6	RHH-IHBC/SS-0630	0.5-3.0	18.0	9.0	8.9	10.0	0.6	23.0
M8	RHH-IHBC/SS-0835	0.5-3.5	20.5	11.0	10.9	12.3	0.6	26.5
M10	RHH-IHBC/SS-1035	0.5-3.5	27.0	13.0	12.9	14.5	0.85	33.0
M12	RHH-IHBC/SS-1260	2.0-6.0	32.8	16.0	15.9	20.0	0.85	37.9

FH-IHB/SS

Stainless Steel

A2 平头半六角 Flat Head Inner-Hex Body



UNIT(单位): mm

螺纹 Thread	编号 P/N	T(GRIP RANGE) Min Max	A Rer	Hole Size $+0.1$ 0	D $+0.07$ -0.1	B	K	L
M4	FH-IHB/SS-0425	0.5-2.5	6.0	6.0	5.9	9.0	0.8	10.8
M4	FH-IHB/SS-0435	2.5-3.5	8.2	6.0	5.9	9.0	0.8	13.0
M5	FH-IHB/SS-0525	0.5-2.5	8.0	7.0	6.9	10.0	1.0	13.0
M5	FH-IHB/SS-0535	2.5-3.5	9.5	7.0	6.9	10.0	1.0	14.5
M6	FH-IHB/SS-0635	0.5-3.5	9.0	9.0	8.9	13.0	1.5	15.8
M6	FH-IHB/SS-0650	3.5-5.0	12.2	9.0	8.9	13.0	1.5	19.0
M8	FH-IHB/SS-0835	0.5-3.5	11.0	11.0	10.9	15.0	1.5	18.0
M8	FH-IHB/SS-0850	3.5-5.0	12.0	11.0	10.9	15.0	1.5	19.0
M10	FH-IHB/SS-1035	0.5-3.5	12.5	13.0	12.9	17.0	1.8	20.3
M10	FH-IHB/SS-1050	3.5-5.0	14.2	13.0	12.9	17.0	1.8	22.0
M12	FH-IHB/SS-1250	2.0-5.0	16.5	16.0	15.9	23.0	2.2	27.5

Blind Rivet Nuts

Blind Rivets

Self-Chinching

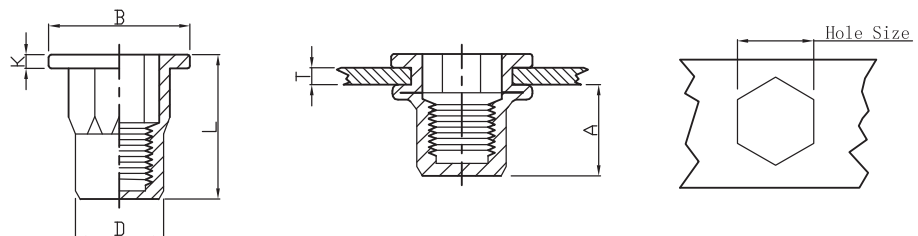
Weld Studs

Rivet tools

FH-IHBC/SS

Stainless Steel

A2 平头半六角盲孔 Flat Head Inner-Hex Body Close End



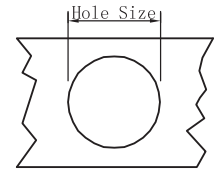
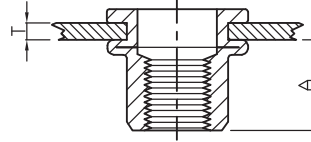
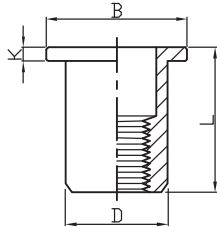
UNIT(单位): mm

螺纹 Thread	编号 P/N	T(GRIP RANGE) Min Max	A Rer	Hole Size $+0.1$ 0	D $+0.07$ -0.1	B	K	L
M4	FH-IHBC/SS-0420	0.5-2.0	12.5	6.0	5.9	9.0	0.8	17.3
M5	FH-IHBC/SS-0525	0.5-2.5	13.5	7.0	6.9	10.0	1.0	19.5
M6	FH-IHBC/SS-0630	0.5-3.0	17.5	9.0	8.9	13.0	1.5	24.3
M8	FH-IHBC/SS-0835	0.5-3.5	20.5	11.0	10.9	15.0	1.5	28.0
M10	FH-IHBC/SS-1035	0.5-3.5	26.5	13.0	12.9	17.0	1.8	33.0
M12	FH-IHBC/SS-1242	0.5-4.2	23.4	16.0	15.9	20.0	1.7	36.0

FH-RB/AL

Aluminium

铝平头光身 Flat Head Round Body Plain



UNIT(单位): mm

螺纹 Thread	编号 P/N	T(GRIP RANGE) Min Max	A Rer	Hole Size $+0.1$ 0	D $+0.07$ 0.1	B	K	L
M4	FH-RB/AL-0420	0.5-2.0	6.0	6.0	5.9	8.8*	0.8*	10.5*
M5	FH-RB/AL-0525	0.5-2.5	7.5	7.0	6.9	10.0	1.0	13.0
M6	FH-RB/AL-0625	0.5-2.5	9.2	9.0	8.9	12.3	1.5	15.0
M8	FH-RB/AL-0830	1.0-3.0	10.2	11.0	10.9	14.3	1.5	16.5
M10	FH-RB/AL-1040	1.0-4.0	11.5	13.0	12.9	16.3	1.6	19.0

Blind Rivet Nuts

Blind Rivets

Self-Chinching

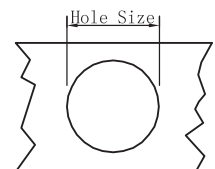
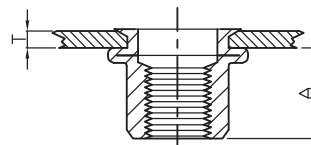
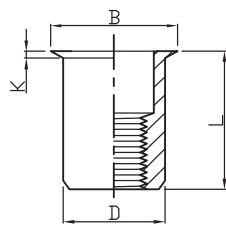
Weld Studs

Rivet tools

RH-RB/AL

Aluminium

铝小头光身 Reduce Head Round Body Plain



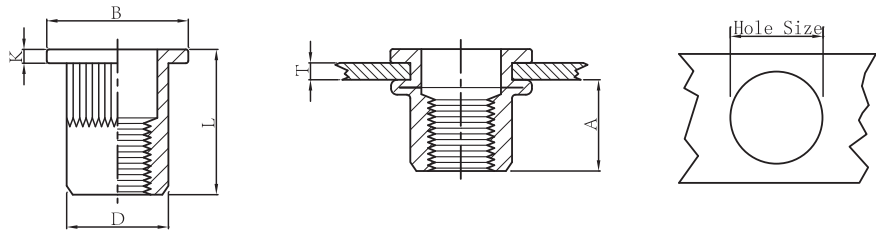
UNIT(单位): mm

螺纹 Thread	编号 P/N	T(GRIP RANGE) Min Max	A Rer	Hole Size $+0.1$ 0	D $+0.07$ 0.1	B	K	L
M4	RH-RB/AL-0420	0.5-2.0	6.0	6.0	5.9	7.0	0.5	10.5
M5	RH-RB/AL-0520	0.5-2.0	7.5	7.0	6.9	8.0	0.5	11.5
M6	RH-RB/AL-0625	0.5-2.5	9.2	9.0	8.9	10.0	0.6*	14.0*
M8	RH-RB/AL-0825	0.5-2.5	10.2	11.0	10.9	12.0	0.65*	15.5*
M10	RH-RB/AL-1030	1.0-3.0	11.5	13.0	12.9	14.1	0.7*	17.7*

FH-KB/AL

Aluminium

铝平头条纹 Flat Head Knurled Body



UNIT(单位): mm

螺纹 Thread	编号 P/N	T(GRIP RANGE) Min Max	A Rer	Hole Size $+0.1$ 0	D $+0.07$ 0.1	B	K	L
M4	FH-KB/AL-0420	0.5-2.0	6.0	6.0	5.9	8.8*	0.8*	10.5*
M5	FH-KB/AL-0525	0.5-2.5	7.5	7.0	6.9	10.0	1.0	13.0
M6	FH-KB/AL-0625	0.5-2.5	9.2	9.0	8.9	12.3	1.5	15.0
M8	FH-KB/AL-0830	1.0-3.0	10.2	11.0	10.9	14.3	1.5	16.5
M10	FH-KB/AL-1040	1.0-4.0	11.5	13.0	12.9	16.3	1.6	19.0

Blind Rivet Nuts

Blind Rivets

Self-Chinching

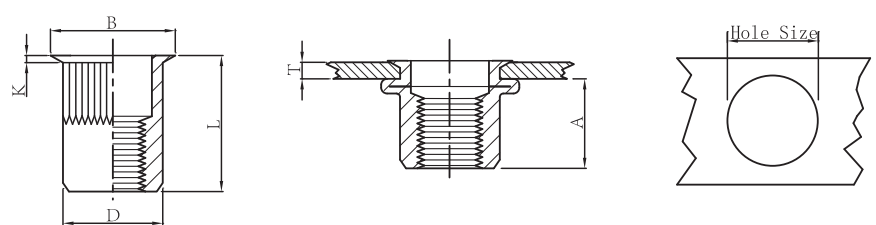
Weld Studs

Rivet tools

RH-KB/AL

Aluminium

铝小头条纹 Reduce Head Knurled Body



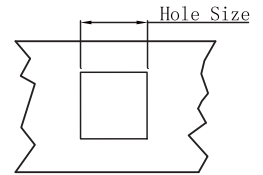
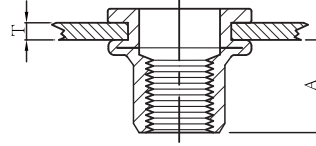
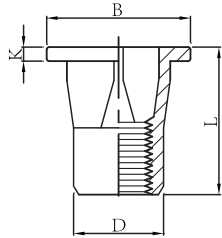
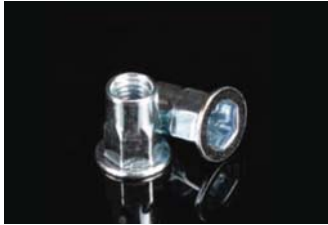
UNIT(单位): mm

螺纹 Thread	编号 P/N	T(GRIP RANGE) Min Max	A Rer	Hole Size $+0.1$ 0	D $+0.07$ 0.1	B	K	L
M4	RH-KB/AL-0420	0.5-2.0	6.0	6.0	5.9	7.0	0.5	10.5
M5	RH-KB/AL-0520	0.5-2.0	7.5	7.0	6.9	8.0	0.5	11.5
M6	RH-KB/AL-0625	0.5-2.5	9.2	9.0	8.9	10.0	0.6*	14.0*
M8	RH-KB/AL-0825	0.5-2.5	10.2	11.0	10.9	12.0	0.65*	15.5*
M10	RH-KB/AL-1030	1.0-3.0	11.5	13.0	12.9	14.1	0.7*	17.7*



FH-SQB

平头方型铆螺母 Flat Head Square Body



UNIT(单位): mm

螺纹 Thread	编号 P/N	T(GRIP RANGE) Min Max	A Rer	Hole Size $+0.1$ 0	D $+0.07$ 0.1	B	K	L
M5	FH-SQB-0515	0.5-1.5	8	7.0	6.9	10.5	0.6	11.2
	FH-SQB-0530	1.5-3.0					0.6	12.7
M6	FH-SQB-0625	0.5-2.5	8.5	9.0	8.9	14.0*	0.8*	14.3
	FH-SQB-0640	2.5-4.0	9.5				0.8*	17.2*
M8	FH-SQB-0830	1.0-3.0	11.5	11.0	10.9	17.5*	1.3*	18.6*

Blind Rivet Nuts

Blind Rivets

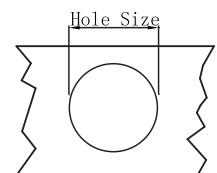
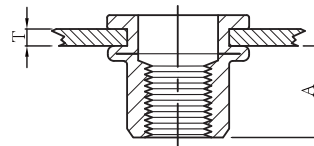
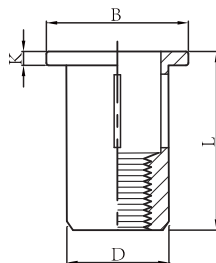
Self-Chinching

Weld Studs

Rivet tools

FH-SLB

膨胀铆螺母 Flat Head Slotted Body

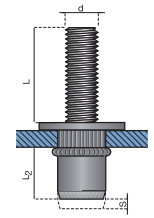
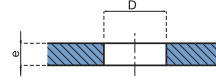
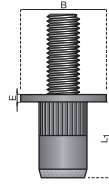


UNIT(单位): mm

螺纹 Thread	编号 P/N	T(GRIP RANGE) Min Max	A Rer	Hole Size $+0.1$ 0	D $+0.07$ 0.1	B	K	L
M5	FH-SLB-0545	0.5-4.5	9.6	7.5	7.4	12.7	1.0	22.0
M6	FH-SLB-0670	0.5-7.0	12.5	8.8	8.7	16.0	1.5	27.0
M8	FH-SLB-0870	1.0-7.0	14.3	11.1	11.0	19.0	1.6	30.5

BRN

铆螺母柱 Blind Rivet Studs



铆螺母柱在连接材料的同时可以起到支撑作用，特别适用于形状比较隐蔽的注塑件。

UNIT(单位): mm

d	铆接范围 e	底孔 直径	头部直径 B	头部厚度 E	变形量 S*	长 L	L1	突出长度(安装后) L2*	产品编号
M5	0.5-3	7	10	1	S=4.7-e	15	11	5.5	3732 705 0115
	0.5-3	7	10	1	S=4.7-e	20	11	5.5	3732 705 0120
	0.5-3	7	10	1	S=4.7-e	25	11	5.5	3732 705 0125
M6	0.5-3	9	13	1.5	S=5.4-e	15	13	7.5	3732 706 0115
	0.5-3	9	13	1.5	S=5.4-e	20	13	7.5	3732 706 0120
	0.5-3	9	13	1.5	S=5.4-e	25	13	7.5	3732 706 0125
M8	0.5-3	11	16	1.5	S=5.4-e	20	14	8.5	3732 708 0120
	0.5-3	11	16	1.5	S=5.4-e	25	14	8.5	3732 708 0125

* S和L2为参考尺寸，S值由其夹持的母材厚度决定，并且S值也适用于安装工具的行程调节。
 单位：毫米。 其它尺寸和规格请联系我们。

Blind Rivet Nuts

Blind Rivets

Self-Chinching

Weld Studs

Rivet tools